

WILKINS

MODEL 550

Double Check Valve Assembly
Backflow Preventers
Sizes 2 1/2", 3", 4", & 6"

ZURN

a step ahead of tomorrow
ZURN INDUSTRIES, INC.



APPLICATION

The WILKINS Model 550 Double Check Valve Backflow Preventer has been designed for installation in potable water lines where a potential health hazard does not exist.

WILKINS' low head loss makes the device most suitable where system pressures are low or where it is important to hold pressure loss to a minimum.

FEATURES

LOW HEAD LOSS

Lowest in industry

LOW MAINTENANCE COSTS

No special tools required to service units

COMPACT SIZE

Easy to install

MODULAR DESIGN

Unitized spring assembly for safety

One piece sleeve and seat

EPOXY COATED MAINCASE

Fusion coated inside and outside

Corrosion Resistant (FDA Approved)

PERFORMANCE

WILKINS Model 550 Double Check Backflow Preventer meets or exceeds the requirements for flow rates and head loss of AWWA, FCCCHR at U.S.C., IAPMO (U.P.C.), ASSE, SBCC, CSA, and U.L.* Consult your local WILKINS representative or factory for other state, county, or city acceptances.

NOTICE

Proper performance is dependent upon the user adhering to recommended installation procedures and by having licensed, qualified personnel perform regular, periodic inspection and maintenance. For proper installation, consult WILKINS' installation and maintenance manual and prevailing governmental and local codes.

Two shut-off valves and four test cocks are provided for testing and maintenance. All Model 550 Double Check Valve Backflow Preventers can be disassembled and repaired without removing the device from the line.

Damage to the device could result wherever water hammer and/or thermal expansion could cause excessive line pressure. Where this could occur, shock arrestors and/or pressure relief valves should be installed downstream of the device.



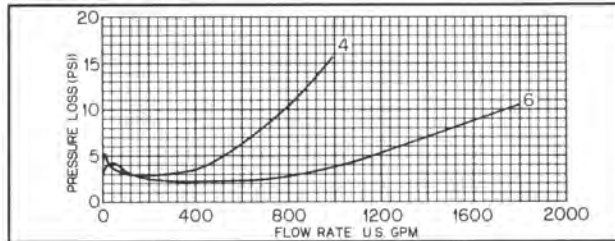
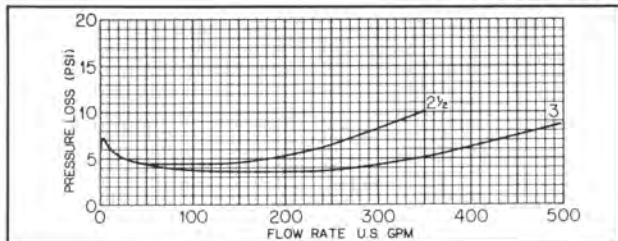
WARRANTY

WILKINS' Backflow Preventers are warranted against defects in material and workmanship for a period of one year from date of shipment strictly in accordance with WILKINS' Certificate of Limited Warranty.

* U.L. listed backflow preventers must include OS & Y Gate Valves.

SPECIFICATIONS

FLOW CHARACTERISTICS



PURPOSE

The WILKINS Model 550 Double Check Backflow Preventer consist of a cast iron (epoxy coated) maincase with two independently operated spring-loaded poppet type check valves.

PRESSURE-TEMPERATURE

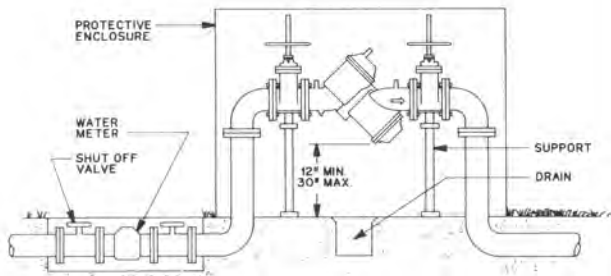
Suitable for supply pressure up to 150 PSI and water temperatures from 33°F to 110°F.

MATERIALS

All corrosion resistant
 Epoxy coated (FDA Approved) maincase inside and outside
 Brass poppet type check valves-
 unitized spring assembly, independently operated, stainless steel springs
 One piece brass sleeve and seat-
 easy to remove

TYPICAL INSTALLATION

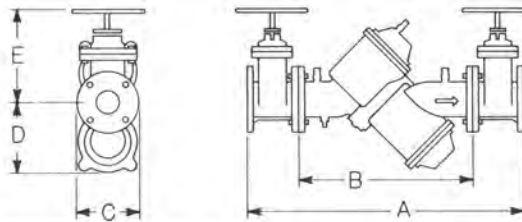
Install with minimum clearance of 12" from floor or grade.
 Install with adequate side clearance for testing and maintenance.
 Protect from freezing.
 Install adequate support blocks.
 If installed in pit or vault consult local codes; provide adequate drainage.



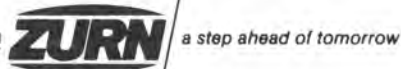
OPTIONS

(Options can be combined)
 Suffix
 R - with resilient wedge shut-off valves
 FS - with flanged strainer
 FSC - with epoxy coated flanged strainer
 ROS&Y - with resilient wedge OS & Y shut-off valves
 L - without shut-off valves

DIMENSIONS & WEIGHTS



MODEL 550	DIMENSIONS (INCHES)					NRS	OS & Y OPEN	OS & Y CLOSED	WEIGHT (LBS)		
	A	B	C	D	E				NRS	OS & Y	LESS GATES
2 1/2	35	20	7.5	7.75	9.25	14	11.75	153.2	229.4	93	
3	36	20	7.5	7.75	10.25	23.5	18	176.6	242.6	93	
4	46	28	9	10.5	12.5	23.5	19	351.6	453.8	225	
6	57	36	11	15	16.75	30	24	780.6	939	565	



- PRESSURE REDUCING VALVES • BACKFLOW PREVENTERS
- TEMPERATURE AND/OR PRESSURE RELIEF VALVES
- BALL VALVES • IRRIGATION VALVES • DIELECTRIC UNIONS
- "Y" STRAINERS

PERFORMANCE UNDER PRESSURE

WILKINS DIVISION

1747 Commerce Way, Paso Robles, CA 93446-3696
 PHONE: 805/238-7100 FAX: 805/238-5766