

WILKINS

a **ZURN** company

Model 575

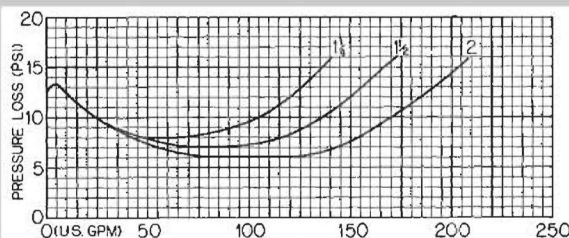
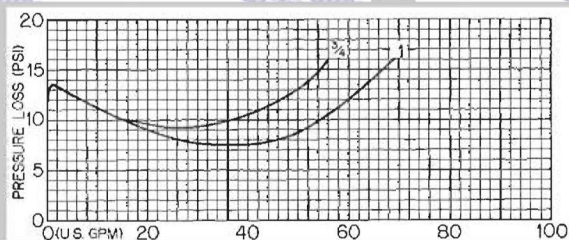
Reduced Pressure Principle 3/4" to 2"



FEATURES

- Lowest head loss in the industry
- No special tools required to service units
- Few moving parts
- In-line serviceability
- Poppet type check valves
- Independently operated
- Sturdy, durable, corrosion resistant
- Hydraulically actuated relief valve
- Easy to install

FLOW CURVES



COMPLIANCE

As of 2001, this unit is approved by USC's FCCC & HR, and IAPMO.

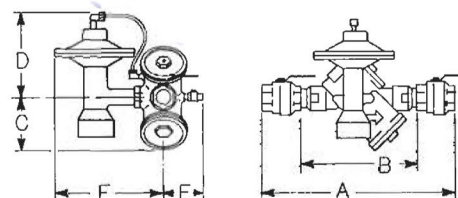
PRESSURE-TEMPERATURE

Suitable up to 150 PSI, from 33°F to 140°F.

OPTIONS

- B - with full port resilient seated ball valves
- S - with bronze "Y" strainer
- U - with union connections
- L - without shut-off valves

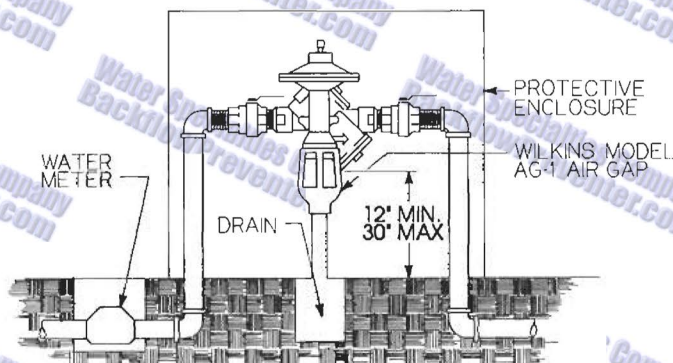
DIMENSIONS & WEIGHTS



MODEL SIZE	DIMENSIONS (INCHES)								WEIGHT (LBS)			
	A Ball Valves	A Gate Valves	A Double Union Ball Valves	B Less Stop Valves	C	D	E	F	Less Stop Valves	With Gates	With Ball Valves	Double Union w/ Ball Valves
3/4	13.75	12.25	15.12	8.5	3.5	5.75	3	7	15	16.5	16.5	19.44
1	14.75	12.75	16.12	8.5	3.5	5.75	3	7	15	17.5	18	20.63
1 1/4	18.25	16.75	N/A	12	4.7	5	3.5	7.25	22	26	26.5	N/A
1 1/2	18.75	16.75	21.25	12	4.7	5	3.5	7.25	22	26.5	28.5	28.6
2	21	16.75	22.25	12	4.7	5	3.5	7.25	22	28.5	33	33.2

TYPICAL INSTALLATION

Install with minimum clearance of 12" from floor or grade. Leave ample room for testing and maintenance. Protect from freezing. Do not install in a pit.



MATERIALS

- All corrosion resistant
- Cast bronze maincase
- Stainless steel springs
- Rubber check valve discs
- Cast bronze relief valve body
- Stainless steel bolts

15

Wilkins
Neptune
Richwell, SMR